



www.hupper.com.au

HARDING TERRACOTTA

See page 2

ORTEGA NAVY

See page 2

ORTEGA COLLECTION BY WARWICK FABRICS

Warwick Fabrics • Ortega Collection



Ortega Clay



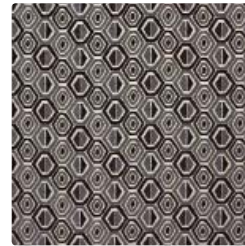
Ortega Moss



Ortega Natural



Ortega Navy



Ortega Onyx



Ortega Pewter



Ortega Terracotta



Harding Clay



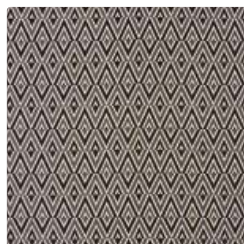
Harding Moss



Harding Natural



Harding Navy



Harding Onyx



Harding Pewter



Harding Terracotta

ORTEGA

Composition – 100% Polyester
 Pattern repeat (cm) – H:35 x V:26.5
 Width (cm) – 140
 Weight (gsm) – 490

HARDING

Composition – 100% Polyester
 Pattern repeat (cm) – H:8.5 x V:18.5
 Width (cm) – 140
 Weight (gsm) – 490

ORTEGA COLLECTION BY WARWICK FABRICS

Relaxed and Contemporary, Ortega is a decorative collection that offers plush textures and a diverse colour palette of earthy on-trend shades.

Ortega Collection

Fabric – CLASSIC JACQUARDS

Usage – General Domestic

Warwick Brand – Halo

Fabric Width – 140 cm

Care Label 1 pile fabrics

* Please refer to Warwick website

www.warwick.com.au





www.hupper.com.au

Made to measure scatter cushions, bench cushions, floor cushions, bed throws, table runners and placemats all available from a huge selection of designer fabrics.

If you have a question about any of our fabrics, or would like to know more about any of our products or services please contact

[**sales@hupper.com.au**](mailto:sales@hupper.com.au)

www.facebook.com/hupper.com.au